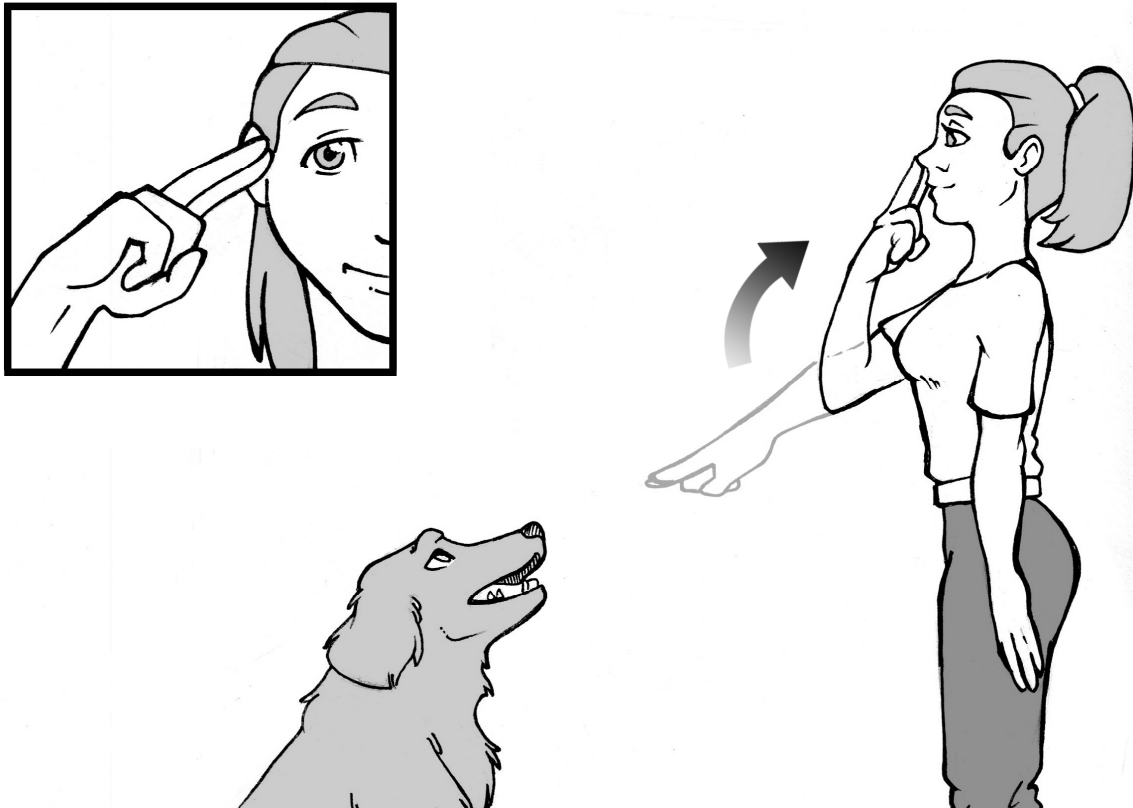




## HUMANE SOCIETY OF BROWARD COUNTY

### Basic Obedience for Dogs

#### Hand Signal – Watch Me



Dogs communicate with each other primarily through body postures and body language. They also attempt to communicate with us using the same techniques. Using hand signals in addition to verbal cues will help your dog to understand more quickly and easily what it is you want him to do.

When using hand signals your motion or signal should start prior to your verbal cue.

**Watch Me:** Extend your arm straight out in front of you and towards your dog's nose (when you train you will have a treat in your fingers). Your hand should be held in a two finger pointing position. In a slow sweeping motion bend your arm and move your fingers towards your eyes or face.