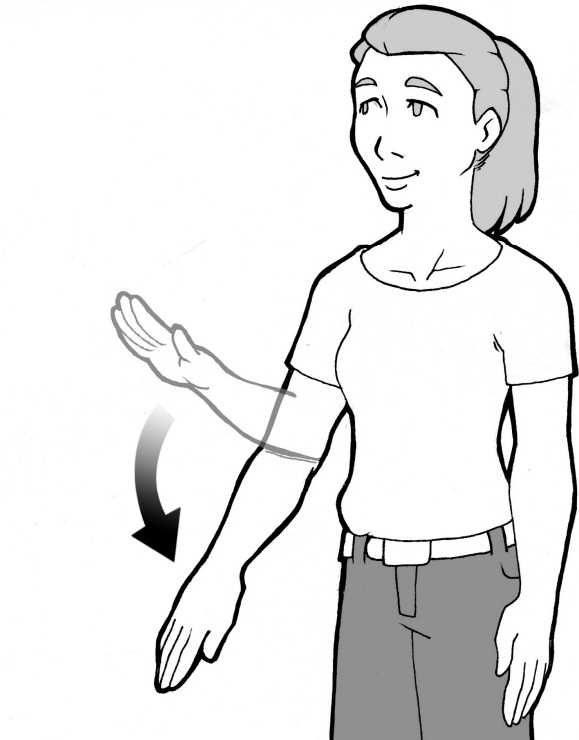




HUMANE SOCIETY OF BROWARD COUNTY

Basic Obedience for Dogs

Hand Signal – Down



Dogs communicate with each other primarily through body postures and body language. They also attempt to communicate with us using the same techniques. Using hand signals in addition to verbal cues will help your dog to understand more quickly and easily what it is you want him to do.

When using hand signals your motion or signal should start prior to your verbal cue.

Down: With your right arm bent slightly at the elbow, start a sweeping motion downward. Your palm should be facing out away from you with your fingers straight.

When first teaching this signal some bending at the waist or knees will help exaggerate the sweeping motion and your dog will find it easier to follow your hand gesture. Remember when using hand signals any motions you do not want as part of the finished product should be quickly weaned out as training progresses.